



**IGas**  
Energy



**Community Information  
Bletchingley Field**

# Introduction

---

This brochure contains all the information from the exhibition held at White Hart Barn, Godstone, Wednesday 15th September 2014.



# About IGas

IGas Energy Plc is one of the UK's leading oil and gas exploration businesses, with licenses to explore in a number of locations in England and Scotland.

We are a British business operating more than 100 sites which produce oil and gas at a rate of approximately 3,000 barrels a day, helping provide the UK with secure energy supplies.

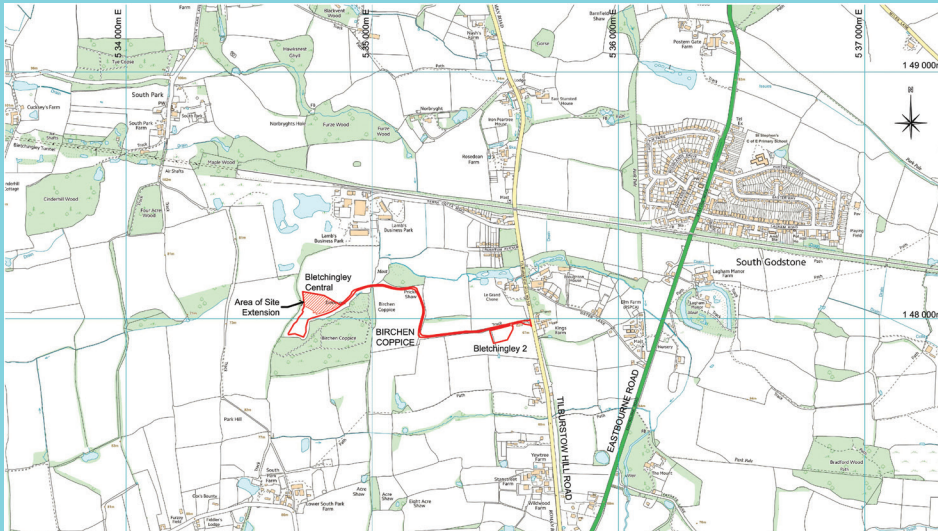
Oil and gas has been safely explored, developed and produced at our sites for

over 30 years and we continue to unlock Britain's untapped energy potential to deliver economic benefits, energy security and jobs for communities across the country.

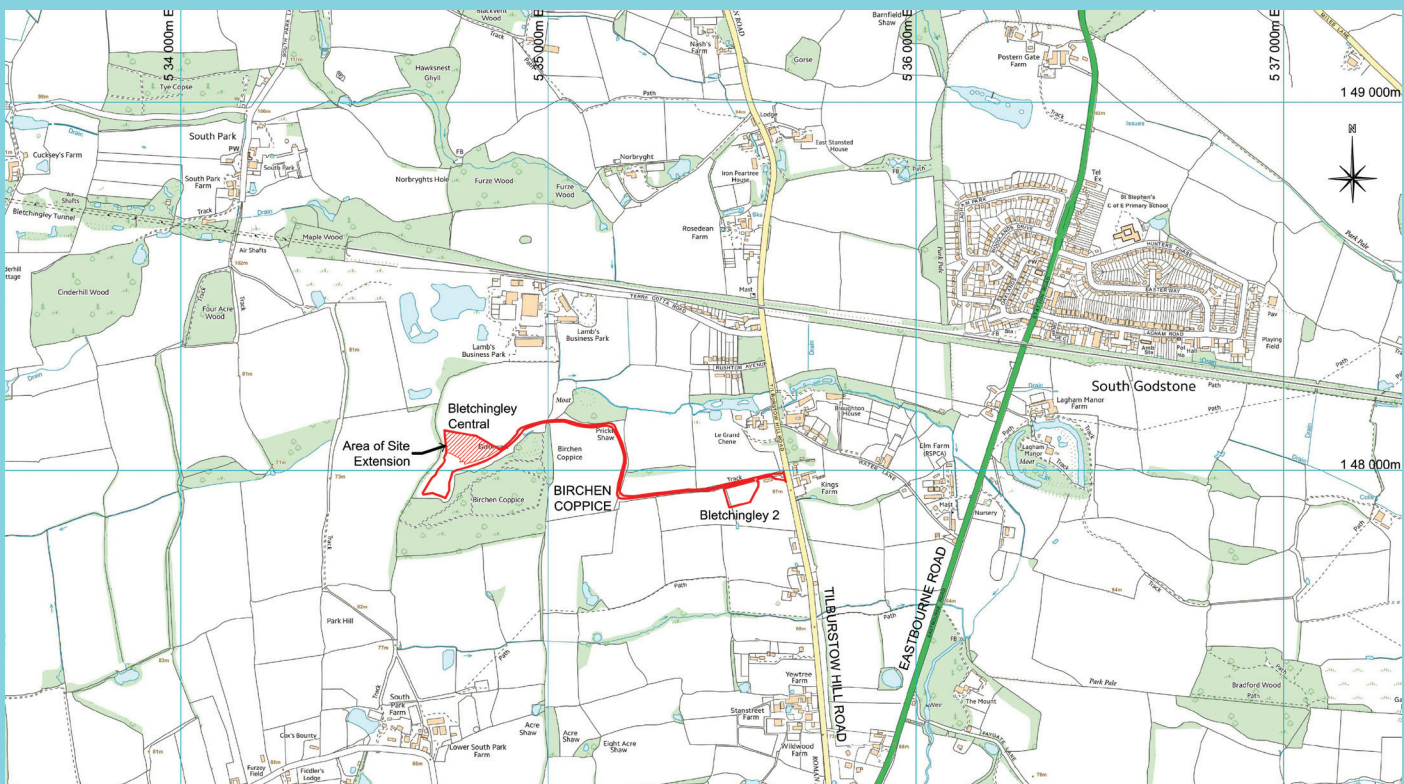
We are part of the communities in which we operate and try to work together, respecting local concerns. We're contributing to the UK's energy mix and securing supplies for major industrial employers for years to come as well as feeding into the National Grid.



# Our Bletchingley sites



# Bletchingley field



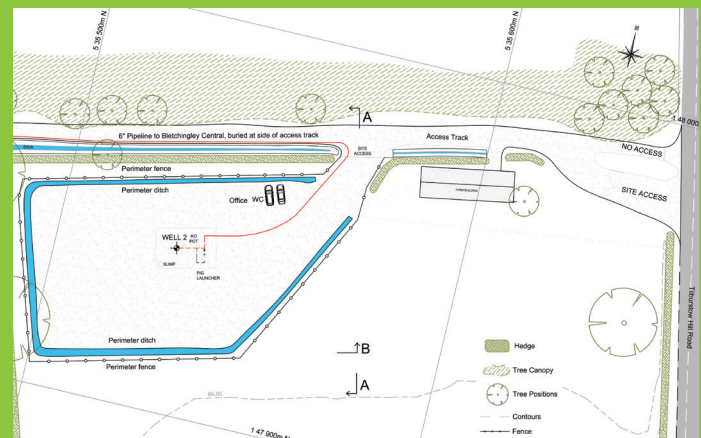
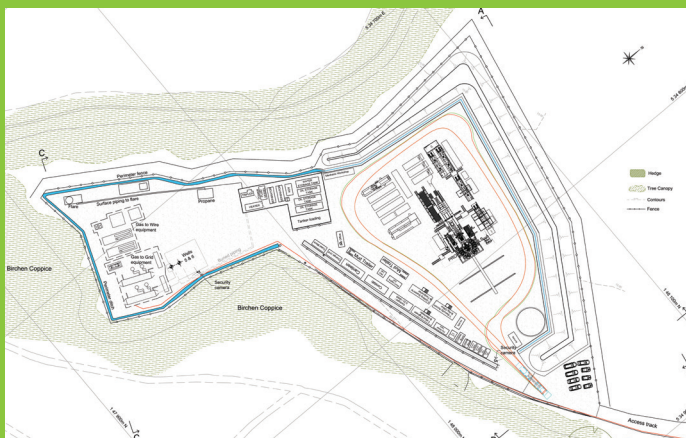
Our field at Bletchingley dates from 1966 and was acquired in 1993 by Star Energy which is now part of IGas Energy. In 2007, permission was given for an appraisal drill which confirmed the presence of oil.

Since then, the company has been continuing to appraise the field and has done so by establishing a small operation about the size of a football pitch (0.7ha) at the site of wells 5 and 6 – which we call “Bletchingley Central”.

Around 300 barrels of oil a day (40 tonnes) is being extracted from Bletchingley Central. Planning permission has recently been extended to allow this appraisal to continue as we finalise our longer term plans.

In 2012 we undertook flow testing of the nearby well site known as “Bletchingley 2”. This confirmed the presence of a viable quantity of gas which is also part of our longer term plans for the field.

# Our plans at Bletchingley



These plans, on which we are now consulting, involve our existing appraisal site at Bletchingley becoming a full production site, which could produce oil and gas for up to 15 years. We currently have no plans or consents to develop shale gas at this location.

At the Bletchingley Central site, we would like to produce up to 600 barrels (80 tonnes) of oil per day and propose to drill a maximum of four new wells in addition to the two already in existence.

We would also like to move the gas that is produced from Bletchingley 2 to Bletchingley Central through pipes either beneath or buried alongside the access track which runs between the two sites. This gas could then be harnessed in two ways:

- To generate electricity for the site itself
- To produce gas to be fed into the local grid

We would need to extend the Central well site by about 0.8ha to accommodate new production equipment, the new oil wells and the gas to wire / gas-to-grid equipment. Security fencing would be needed plus new water and oil storage tanks and a new tanker loading area.

Bletchingley 2 would remain low key and would need little more than the laying of two connecting pipelines plus upgrading of the well site surfacing, fencing and a short workover. This will require a workover rig being brought onto the site necessitating the well to be flared for a short period of up to 48 hours.

# Preliminary timetable and planning application process

Our preliminary timetable envisages submission of the planning application to Surrey County Council before the end of 2014. If permission is granted, we would then extend the Central well site and install new equipment in the summer of 2015. Up to four new wells would be drilled in pairs between 2016 and 2020, taking around 7 months per set, with oil and gas production envisaged until around 2030 based on current reserve estimates. It would then take two years to fully decommission and restore the site.

Stage	Phase	Description	Timescale
One	1a	Upgrading and extension of well sites and installation of production equipment	Works - 18-20 weeks
	1b	Gas to wire, gas-to-grid production and oil production from existing two wells	Up to 15 years production – up to 2030
Two		Set up, drilling and testing of up to four additional hydrocarbon wells in sets of two	Seven months each set
Three		Ongoing gas-to-wire/grid production and oil production from up to six wells	Production up to 2030
Four		Decommissioning and restoration of sites	2-12 months plus aftercare

# Process

The planning application will be made up of a Planning Statement and an Environmental Statement, both of which will be available to view once submitted on the IGas Engage website [www.igas-engage.co.uk/our-work-in-bletchingley](http://www.igas-engage.co.uk/our-work-in-bletchingley). This development proposal will be subject to a voluntary Environmental Impact Assessment. This will consider assessment of the potential significant effects of the development on the environment, community and economy. Key issues in relation to this proposal will include assessment of:

- Transport and access
- Landscape, character and visual impact
- Flood risk
- Ecology (including soil)
- Groundwater and surface water
- Noise
- Archaeology
- Air quality

The Environmental Impact Assessment (EIA) will assess the scale, duration and impacts of the development on the environment, local community and economy. Mitigation measures, that can be built into the design of the development to limit potential effects, will also be assessed.

The sites are already covered by an Environmental Protection Permit (EPR) and an application to update this permit will be made to the Environment Agency at the same time as the planning application. Environmental permits will also be sought from the Environment Agency prior to any drilling operations starting in relation to mining waste, drilling and groundwater protection.



# The drilling rig



The rig which would drill the proposed new wells at Bletchingley Central is similar to one which successfully drilled at the site in 2007 without giving rise to local complaints. When fully extended, the rig would be between 32-38m high. The wells would be drilled in sets of two. Overall, the operation could take around seven months, which includes setting up and removal of the rig. Drilling itself would be a 24-hour operation and would take 18 to 20 weeks to drill two wells, with two more only being added if necessary.

Phase	Description	Timescale
1	Temporary fence construction	One week
2	Rig mobilisation	Two weeks
3	Drilling of up to 2 wells	16-20 weeks
4	Rig demobilisation	Two weeks
5	Short term testing	Six weeks
6	Temporary fence removal	One week

# Proposed Operations

## Hours of Operation

The proposed hours of operation will be as follows:

- Construction will be during normal working hours ie. 0800-1900 Monday to Friday and 0800-1300 for Saturday
- Site mobilisation and demobilisation during normal working hours
- Drilling activity 24/7
- Production will be a 24-hour operation ie. the equipment will need to be working – but tankers and deliveries will only occur during normal hours of operation

## Traffic Movements

The existing access track onto Tilburstow Hill Road will be used for the lifetime of the development. All traffic will access the site from Tilburstow Hill Road. All traffic will enter and leave the site from the south using Tilburstow Hill Road, the A22 and then the M25. A summary of traffic movements per day at the key stages and phases is set out below:

Stage	Car or Light Van	HGVs	Duration
Existing	6	4	Ongoing up to one year
Construction	20	44	Up to 20 weeks
Gas to wire/grid production and two well oil production	8	4	Up to 15 years
Rig mobilisation	20	20	Two weeks
Drilling	20	14	20 weeks
Rig demobilisation	20	20	Two weeks
Gas to wire/grid production and up to six wells producing hydrocarbons	10	8	Up to 15 years
Restoration/Decommissioning	16	4	

# The regulatory framework

## Drilling and regulation

The drilling programme will be completed in accordance with industry best practice and all applicable regulatory requirements, set out by the Department of Energy and Climate Change (DECC), the Environment Agency and the Health and Safety Executive as well as the conditions set out in the planning consent. There are numerous standards and guidelines that we have to conform to, irrespective of the type of well being drilled (CBM, conventional oil or gas or a shale well).

### Regulation in the UK

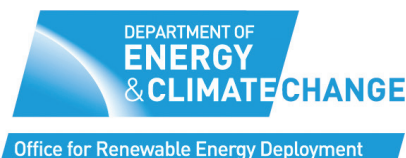
In the UK, we have an exemplary regulatory regime which drives responsible and effective management for the health and safety of any drilling operation and the associated environment.



Mining Industry Act, 1926.  
[16 & 17 Geo. 5. Ch. 28.]



ARRANGEMENT OF SECTIONS. A.D. 1926.



Petroleum Act 1998



# How oil and gas is formed and trapped

All of the oil and gas we use today began as microscopic plants and animals living in the ocean millions of years ago. As they lived, they absorbed energy from the sun, stored as carbon molecules in their bodies. When they died, they sank to the bottom of the sea. Over millions of years, layer after layer of sediment and other plants and bacteria were formed.

As they became buried ever deeper, heat and pressure began to rise. The amount of pressure and the degree of heat, along with the type of biomass, determined if the material became oil or natural gas.

After oil and natural gas were formed, some became trapped under impermeable layers of

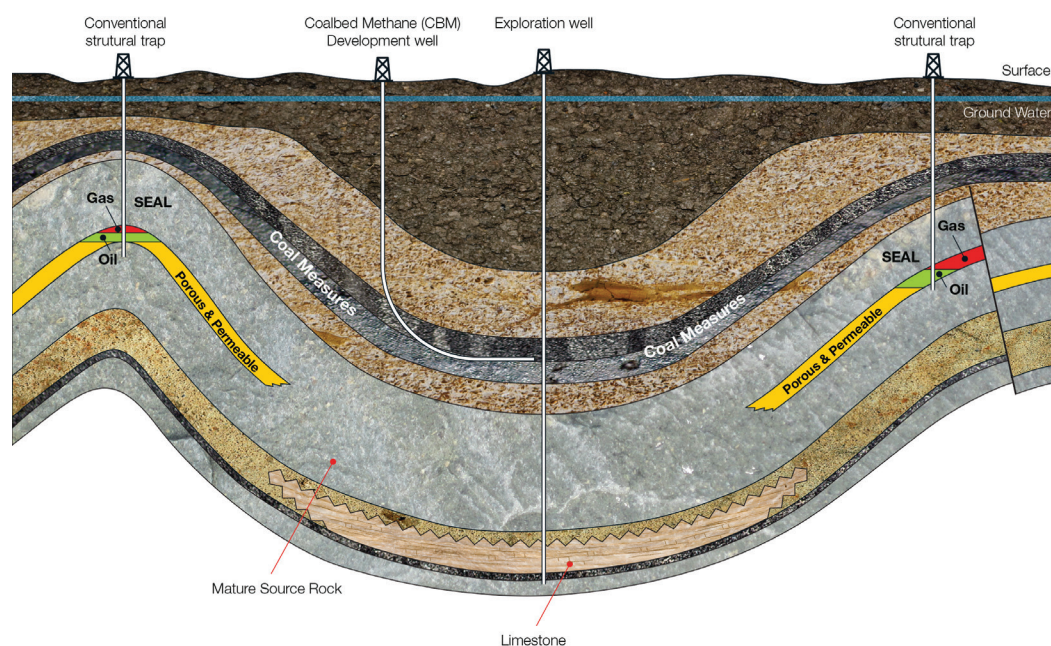
rock or clay – what we call ‘cap rock’. These trapped deposits are held in a ‘reservoir rock’ and this is where we find oil and natural gas today.

## Cap rock is impermeable

The cap rock seals the hydrocarbons in place and prevents them from leaving the reservoir rock and migrate to the surface. Typical cap rocks includes clay stones and shales.

## Reservoir rock is porous and permeable

The reservoir rock is typically sandstone or limestone. Oil or gas is stored in spaces in the rock that was deposited in tropical seas 200 million years ago.



# IGas in the community

We place huge importance on building trust and understanding within the local communities in which we operate.

Our philosophy is an open approach to communication at all stages of our work, from pre-planning through to reinstatement of the land.

Where we can, we identify potential issues in advance and work with communities to solve any problems that arise. Typical issues include:

- Visual impact
- Ecology and nature conservation
- Vehicle movements
- Noise
- Air quality and water protection
- Operating hours and lighting
- Geology and landscape
- Cultural heritage

## **Our approach to community liaison**

We regard communicating with our neighbours in local communities as essential, recognising that they have the right to be consulted and given every opportunity to comment.

We initiate Community Liaison Groups at sites where new developments are proposed and feel that both IGas and the groups benefit greatly from the resulting two-way dialogue.

The Community Liaison Groups are supported by local exhibitions, presentations, brochures, meetings with neighbours, media relations and, where appropriate, web-based activity to ensure we are as accessible as possible.

Above all else, IGas believes in ongoing contact with the communities where our sites are based.



Birchwood Colts



# The IGas Energy Community Fund

The IGas Energy Community Fund was set up in 2008 and has since delivered some £500,000 to wide-ranging projects in communities close to our operations. We recognise that we can have the potential to affect our neighbours and we accept the responsibility to try and minimise those impacts and to operate in a socially-acceptable manner. We know that a good corporate neighbour is one who contributes to the wider well-being of the community. Projects supported include those shown here:

## **Bletchingley Church House Appeal**

Church House has been used as a community building for over 100 years but was in “desperate need of modification” and had to conform to modern standards. The aim was to provide a modern facility to meet a range of needs across the whole community, including a string of disadvantaged groups. The fund has donated £14,000 towards this project.

## **South Godstone Boxing and Fitness Club**

Surrey Police set up a boxing and fitness club for South Godstone as a response to problems with anti-social behaviour in the area. The idea came as a result of talking to local young people, some of whom boxed elsewhere. The successful project received a grant of £2,000 from the fund. It is part of a national initiative through which youngsters can gain certificates in boxing at different levels.

## **Defibrillator for Bletchingley**

The fund awarded a grant of £1,500 to give the community access to a defibrillator for potential use before a responder or ambulance arrives. The project was proposed to the parish council by the local ambulance service on the basis of previous call levels. The equipment is accessible to anyone, regardless of training, as simple verbal instructions are available on how to use it.

## **Healthy eating for teenagers at Blindley Heath**

The youth club received a grant of £1,985 to enable it to run a healthy eating and exercise project. The project included coaching from a professional to encourage exercise and advice on budgeting, shopping and cooking to achieve a healthy diet.

## **Suspended ceiling for South Godstone Sports Hall**

The South Godstone Sports Hall was already well used by various local sports clubs, but its committee was keen that, as the only community building in the area, it should also attract bookings for social functions. To achieve that it needed to be made to feel more intimate - achieved with a suspended fabric ceiling and a grant of £1,500 from the fund.



# Thank you for visiting our exhibition

We hope you found your visit today useful.

IGas will continue to update the community as and when the plans for this site develop so we hope to see you again soon.

If you need any further information please visit our website **[igas-engage.co.uk](http://igas-engage.co.uk)**

Or call our information line **0203 675 6058\***  
open weekdays from 10am - 4pm.

\*Calls are charged at the standard rate. Calls from mobiles may cost more.



---

**IGAS ENERGY**  
*Community Fund*

---

**UKOOG**

---



T: 020 3675 6058  
[igas-engage.co.uk](http://igas-engage.co.uk)

**IGas**  
Energy

